

# LANDS AND SURVEYS DEPARTMENT

ST. VINCENT W.I.

Field Book No.

Survey Order No. P498/2021

Correspondence No.

Parish of St George

Cadastral Block No.

Block or Lot Upper Sion Hill

Grid Co-ordinates of sta. I7

E 484 815.37 M

N 1453 791.40 M

### TRAVERSE

LOT	LINE	BEAR	DIST
0	533 - 117	171° 24' 02"	89.31
	117 - 115	224 06 08	109.40
	115 - 118	348 14 04	25.92
	118 - 120	341 36 48	27.88
	120 - 76	335 22 29	16.08
	76 - 533	37 50 25	134.72
	43 - 15	263° 43' 57"	71.45
	43 - 58A	78 51 51	93.64
	15 - J3	55 43 03	3.33
	J6A - 13	335 20 17	19.54
	111 - 113	56 00 15	31.10
	132 - 43	200 26 12	212.97
	125 - 62	288 14 25	20.08
	62 - 64	24 57 01	12.25
	107 - 112	132 29 12	29.67

LOT	LINE	BEAR	DIST
18	95 - 88	56° 44' 59"	60.86
	88 - 114	102 20 40	90.02
	114 - 111	174 22 58	41.41
	111 - 110	219 46 34	11.37
	110 - 109	245 06 30	7.98
	109 - 107	267 05 14	37.78
	107 - 93A	254 17 53	47.45
	93A - 95	320 25 56	70.01
19	124 - 123	92° 06' 30"	53.87
	123 - 122	105 51 28	31.54
	122 - 121	126 57 35	13.87
	121 - 119	143 5 59	20.09
	119 - 116	161 40 30	26.26
	116 - 114	168 15 24	37.65
	114 - 88	282 20 00	90.02
	88 - 124	335 44 45	80.25
21	117 - 17	171° 26' 16"	108.02
	17 - 11A	232 00 20	65.80
	11A - 113	313 24 55	39.50
	113 - 115	344 20 33	43.22

LOT	LINE	BEAR	DIST
16A	52 - 61A	126° 08' 11"	120.27
	61A - 60	231 03 42	83.75
	60A - 58A	249 06 00	20.37
	58A - 57A	268 19 28	12.43
	57A - 56A	296 50 30	22.68
	56A - 55A	327 59 09	11.23
	55A - 54A	352 54 57	11.04
	54A - 53A	6 07 29	10.65
	53A - 52	16 04 02	93.53
17A	125 - 129	31° 06' 46"	18.21
	129 - 128	48 02 59	14.72
	128 - 127	61 14 48	16.38
	127 - 126	77 25 10	16.65
	126 - 124	88 25 02	32.38
	124 - 88	155 44 45	85.25
	88 - 95	236 44 59	60.86
	95 - 90	236 04 18	2.91
	90 - 925	319 01 33	99.20
	76 - 75	316° 46' 30"	18.17
	75 - 74	304 17 48	14.50
	74 - 72	290 54 24	14.32
	72 - 71	278 11 34	18.01

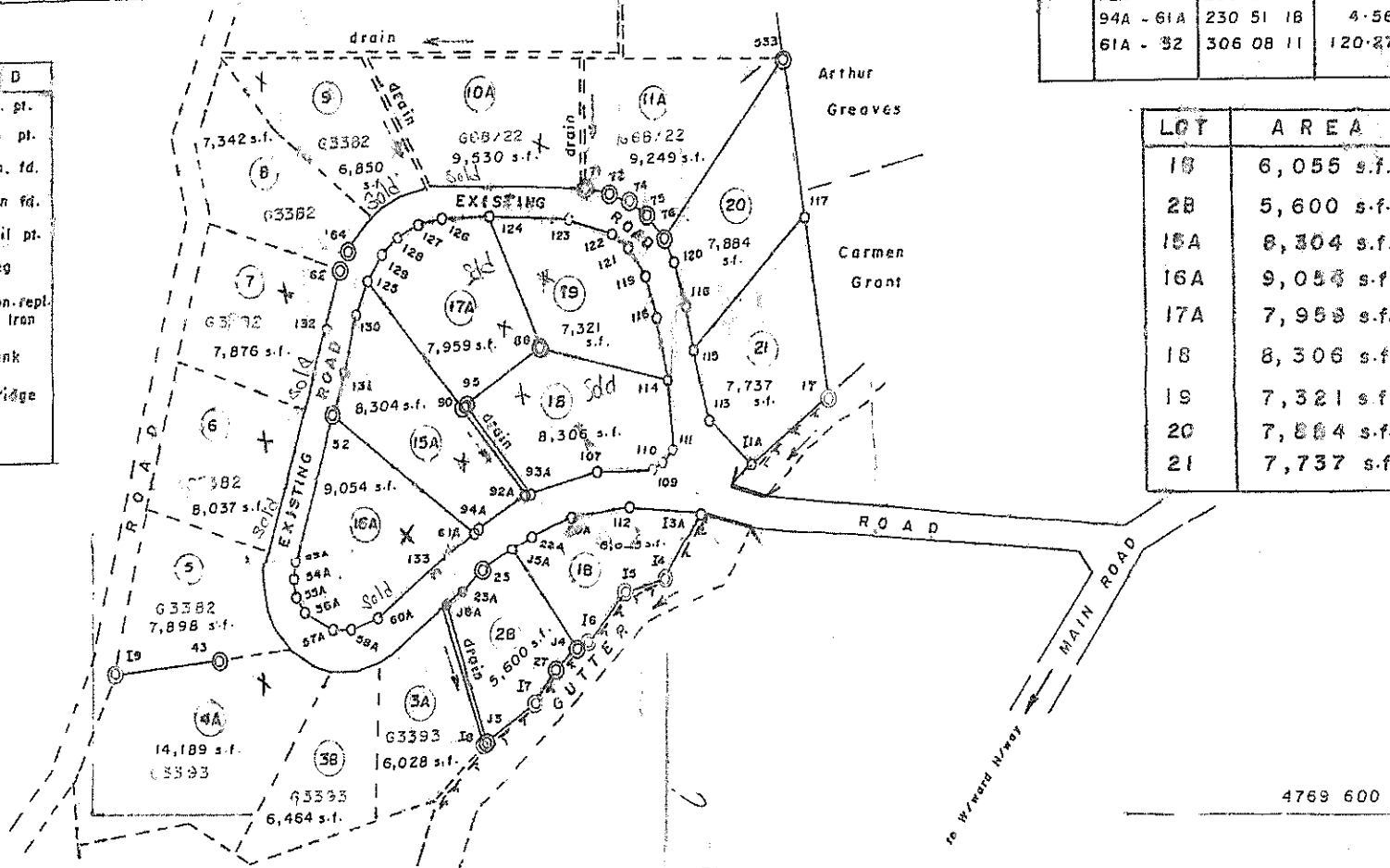
LOT	LINE	BEAR	DIST
18	J5A - 22A	60° 15' 29"	16.11
	22A - 20A	66 39 10	29.43
	20A - 112	80 09 26	39.98
	112 - 13A	90 59 56	50.57
	13A - 14	211 20 58	48.63
	14 - 15	253 41 46	28.45
	15 - 16	220 55 20	39.40
	16 - 14	246 18 49	8.08
	J4 - J5A	323 22 49	75.33
28	J5A - J4	193° 22' 49"	75.33
	J4 - 27	228 36 45	19.42
	27 - 17	214 52 32	23.54
	17 - J3	238 07 25	40.00
	J3 - J6A	341 30 28	67.32
	J6A - 23A	55 59 00	12.08
	23A - 23	45 36 26	19.22
	23 - J5A	57 29 40	23.67
15A	52 - 131	16° 40' 04"	27.16
	131 - 130	12 53 26	33.83
	130 - 125	22 59 07	21.92
	125 - 90	139 01 33	99.20
	90 - 92A	140 26 55	68.99
	92A - 94A	239 05 17	37.30
	94A - 61A	230 51 18	4.56
	61A - 32	306 08 11	120.27

Ronald Browne et al

63035

LEG	END
○	Iron pt.
○	Iron pt.
⊙	Mon. fd.
⊙	Iron fd.
⊙	Nail pt.
⊙	Peg
⊙	Mon. repl. Iron
⊙	Bank
⊙	Bridge

LOT	AREA
18	6,055 s.f.
28	5,600 s.f.
15A	8,304 s.f.
16A	9,056 s.f.
17A	7,959 s.f.
18	8,306 s.f.
19	7,321 s.f.
20	7,884 s.f.
21	7,737 s.f.



Heirs of  
Arthur Simeon Joshua  
G3139



SCALE - 1/1000

Distances are in feet/meters

This plan supersedes lots 15 - 17 on G3382  
lots 1A & 2A on G3395 & a portion  
of G3145.

4769 600

Note - To obtain true bearing add  
PLAN of a parcel of Land bordered Pink containing altogether Sixty eight thousand,  
two hundred and twenty one square feet

Surveyed by me with due authority in September 2021 at the instance of Mr. Reuben John

McArthur Robertson  
Licensed Land Surveyor